



**EUROHONKA** *Log Houses*

EURO LOGHOUSES OY

**DETACHED HOUSES**





**EUROHONKA** Log Houses  
EURO LOGHOUSES OY

## Eurohonka Log Houses - making dreams come true

Eurohonka is one of the first log house companies in Finland. Our company was founded in 1965 and since then we have been fabricating log houses, mainly to export. Houses build by us are usually one of a kind and are created according to client's individual ideas.

Our main objective is to be able to offer a product, which both we and the client can be proud of. The entire personnel at the factory is highly skilled and their abilities have had a huge significance, when creating houses. Our projects sizes vary, from a thousand squaremeter building to a dog-house and everything in between. But still, most of the houses made by Eurohonka, are ordinary homes for ordinary people.

## Eurohonka Log Houses - versatile wood production

In our selection, we have the most common log sizes, but we do also have the readiness to fabricate logs in variable sizes.

We mainly build houses from log, but we also have the capability to manufacture houses with different kind of structural systems. For example all exterior walls can be made from timber frame elements.

We are known for our style of combining traditional log structure with timber elements. Meaning, that we can supply pediments, bay windows, towers, dormers etc. as timber elements. The elements are covered with same profile log panel as the actual

log used in the rest of the building. Log nooks can be used to give real log house feeling or another nook option for element walls is vertical plank

Energy efficiency is one of the most discussed topics of today. And we at Eurohonka, are ahead of the regulations. Because of this, we have brought back an old central European way of building log houses; the double frame. With a little product development, we have brought it up-to-date, so that its insulating capacity would exceed all the expected tightenings of regulations. Our answer; the EUROLOG THERMO.

## EUROHONKA log types

**Eurohonka has a log type for every need and budget.**



70, 95 and 120 mm massive logs we fabricate from billets, blanks, pre-forms made with 2-ex sawing technique. This way of cutting through the "heart" of the timber minimizes cracking and makes its characteristics more similar to those of laminated logs. 70x208 mm massive log we fabricate from the same raw material as the actual laminated logs are made, so it is as close to laminated as you can get exterior-wise.

70 or 95 mm massive log with insulation frame and log panelling is the most typical structure in houses exported to middle-Europe.

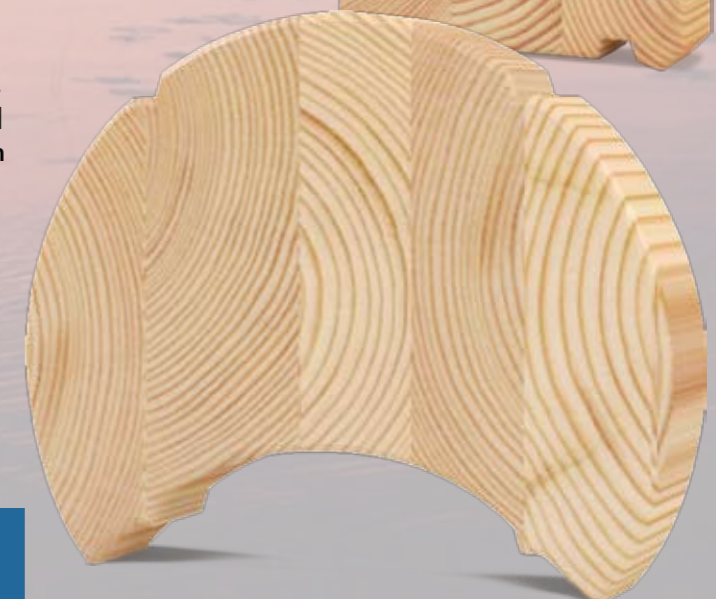
140-200 mm massive square logs are fabricated from one timber using a centuries-old method. Because of the size, these logs are suitable for villas, which are kept warm through winter. This sized log has its "heart" still in the centre, which causes some cracking, when logs dry. That is why these



Eurohonka's round log sizes are 150, 170, 190, 210, 230, 250 and 270 mm. Massive round logs properties and manufacturing process are the same as massive planed logs.

Laminated logs can be fabricated in various different sizes. The most usual thicknesses are 88, 113, 135, 168, 180, 202, 215 mm.

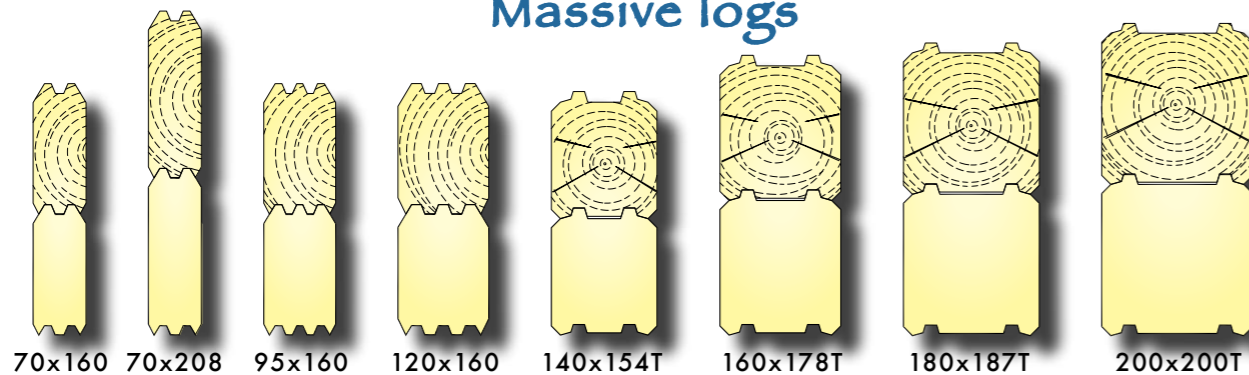
In our log selection there are also laminated round logs. As with all laminated logs, the best quality is minor amount of cracks (practically non at all). Due to at least 30 % greater material consumption compared to same-sized square laminated log, laminated round log is our most expensive product. Sizes vary from 190 to 295 mm.



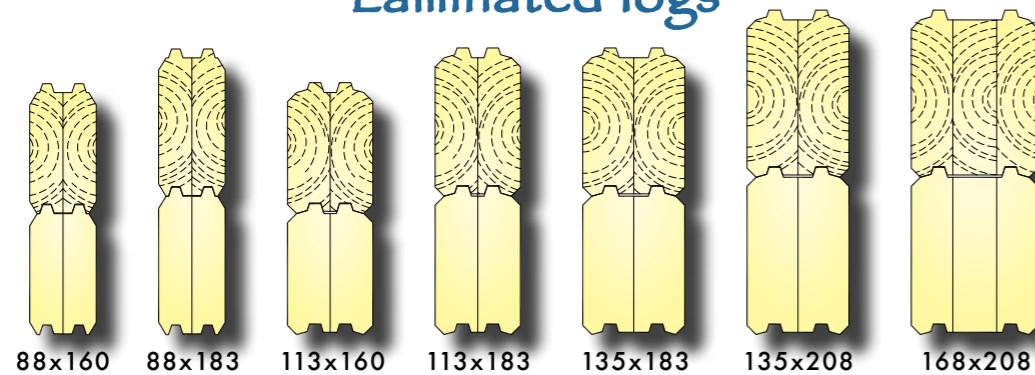
## EUROHONKA LOG PROFILES

Here we have Eurohonka's most common profiles. Naturally we produce logs in various different widths and heights. If wanted we can supply your house even with 330 or 400 mm thick laminated log.

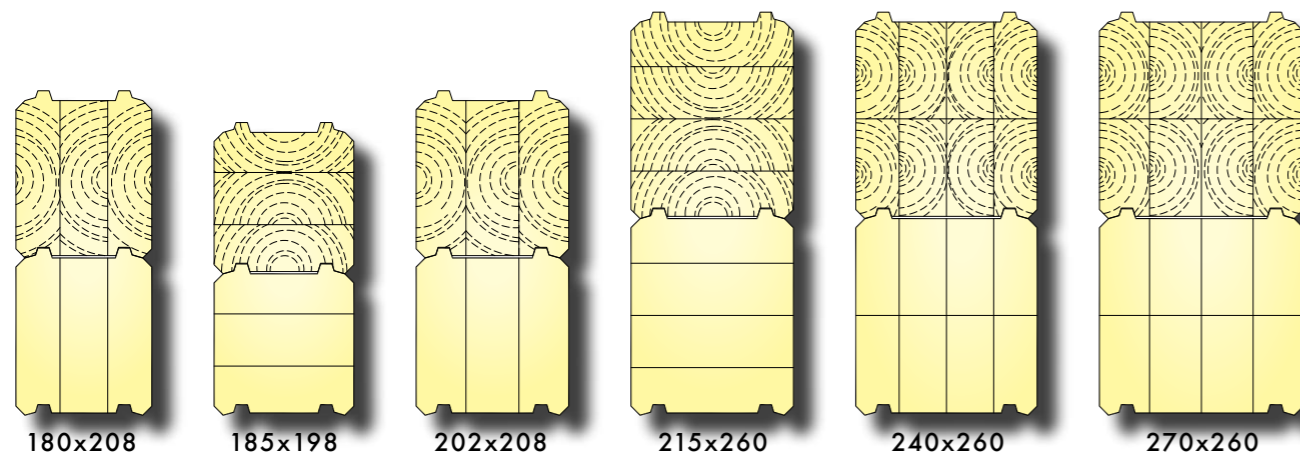
### Massive logs



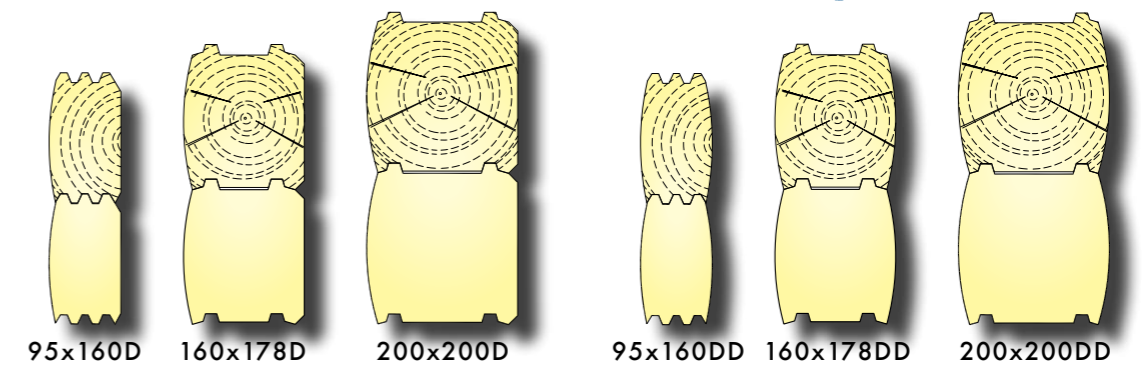
### Laminated logs



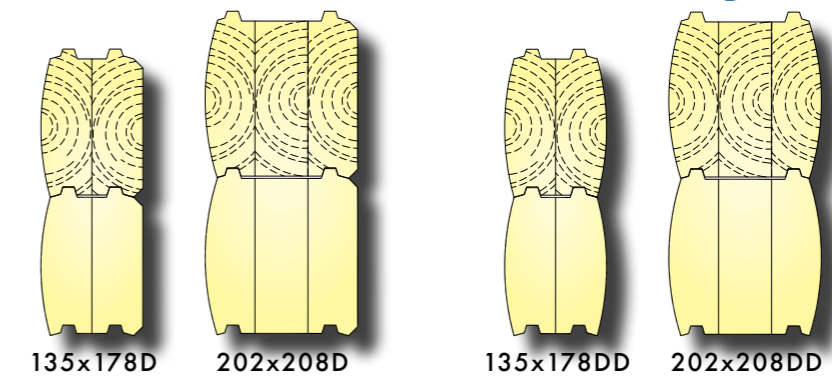
### Laminated logs



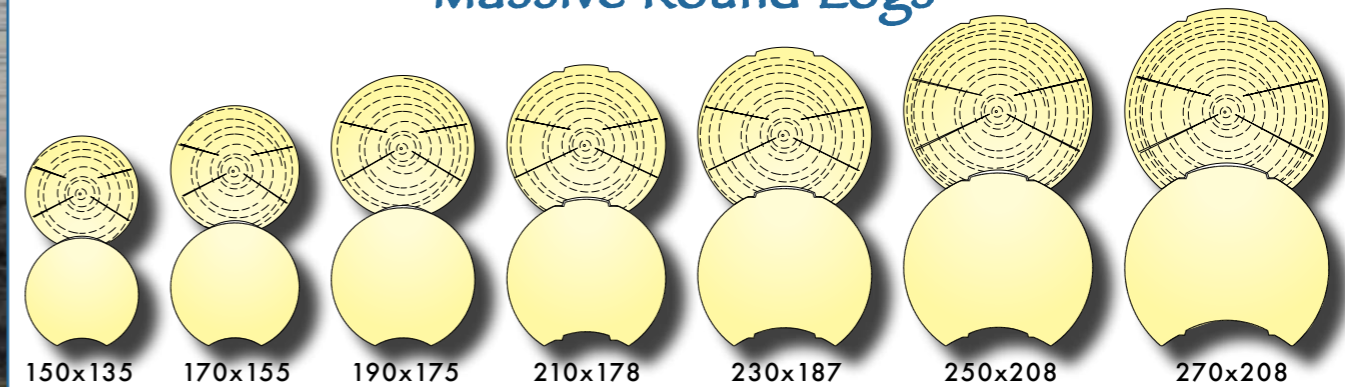
## Massive D- and Oval Logs



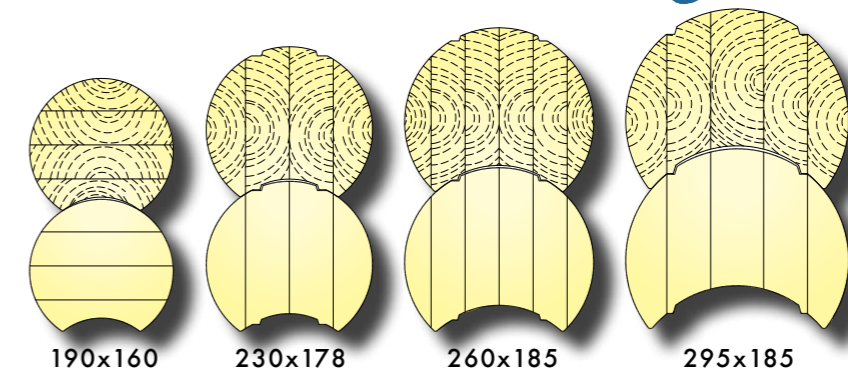
## Laminated D- and Oval Logs



## Massive Round Logs

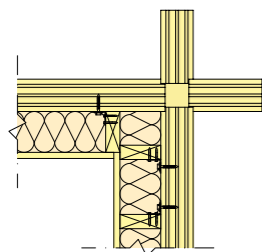
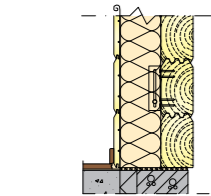
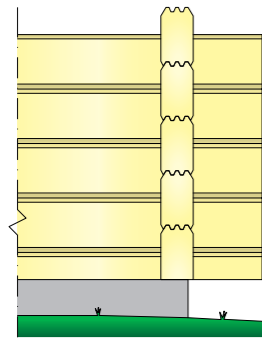


## Laminated Round Logs



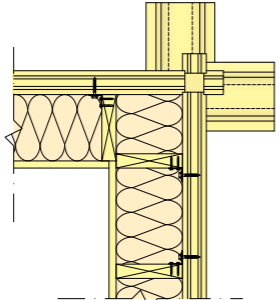
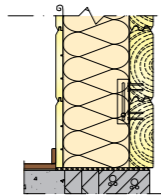
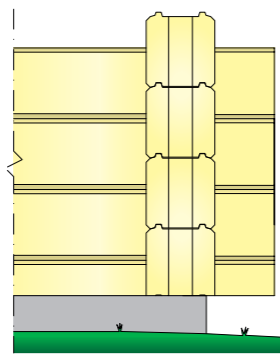
# EUROHONKA INSULATED LOGWALLS

## INSULATED MASSIVE LOG



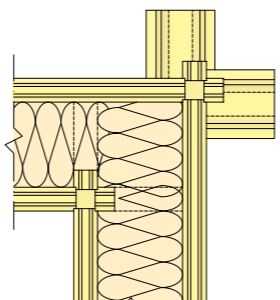
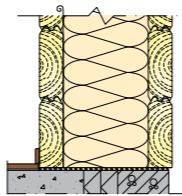
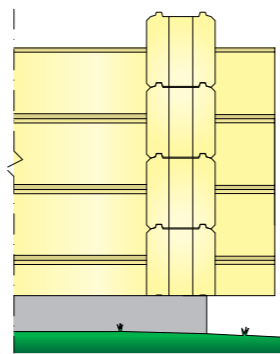
Can be applied to all log types and profiles.  
 • U-value 0.17 is achieved e.g. by combining 95mm planed log and 170mm thick, heat insulated extra timber frame

## INSULATED MASSIVE LOG "Lamilook"



The wall frame is made from massive 70x208 logs  
 • Outer corners are made from laminated log 202x208mm  
 • Complete appearance of laminated log  
 • U-value 0.15 is achieved with 70mm planed log + 195mm thick, load bearing, heat insulated extra timber frame

## LOW-ENERGY LOG WALL

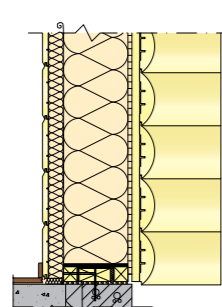
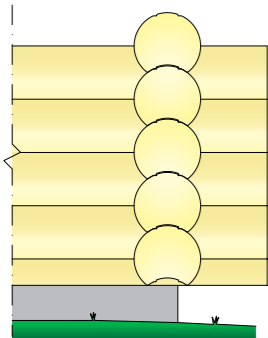


The double wall frame is made from massive 70x208 logs  
 • Outer corners are made from laminated log 202x208mm  
 • Complete appearance of laminated log  
 • Total thickness of wall depends on thickness of heat insulation  
 • U-value 0.13 (total thickness of wall 400mm)  
 • U-value 0.17 (total thickness of wall 320mm)

# EUROHONKA PREFABRICATED STRUCTURES

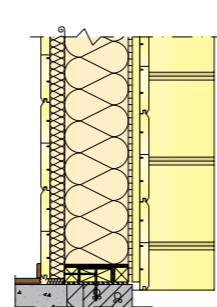
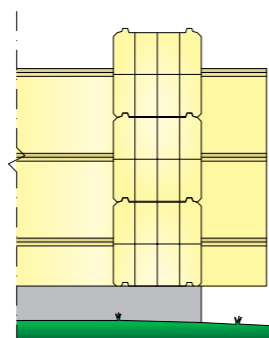
- WHEN ORDINARY IS NOT ENOUGH AND FROM ELSEWHERE IS NOT AVAILABLE -

## ROUND LOG paneled wall element



Frame structure is selected as appropriate  
 • Outer corners from 200mm laminated round logs

## Planed log paneled wall element



Frame structure is selected as appropriate  
 • Numerous log panel and log corner options from massive log 95x160 to laminated log 260x270



EUROHONKA Log Houses  
 EURO LOGHOUSES OY

# DETACHED HOUSES





EUROHONKA *Lóg Houses*  
EURO LOGHOUSES OY

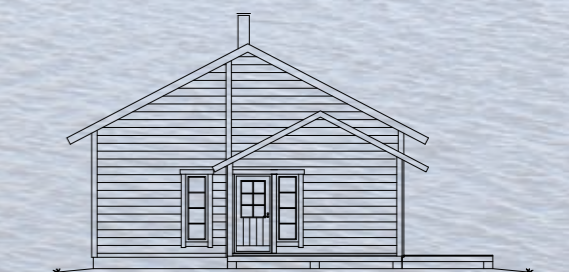
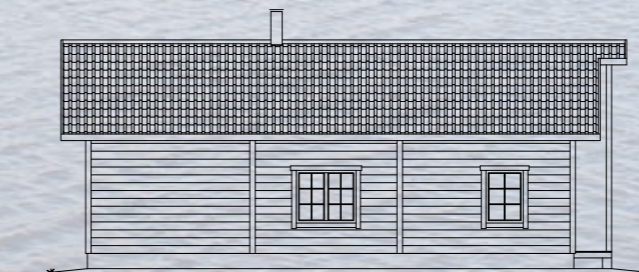
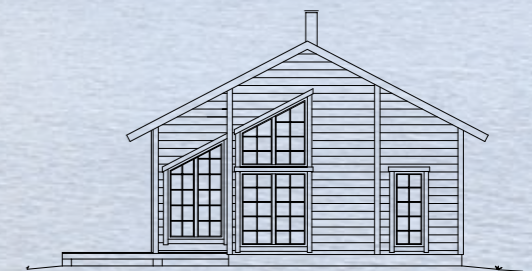


## EUROHONKA – Detached houses

Houses build with years of experience. To us, model changes are more a rule than an exception. Choose the apperance, which you want and the amount of space that you need, and we will try our best to make it work as a whole. For that is our job, a welcome challenge.

**ELH-100**  
**Pääskynpesä**  
2 bedrooms

Area 100 m<sup>2</sup>

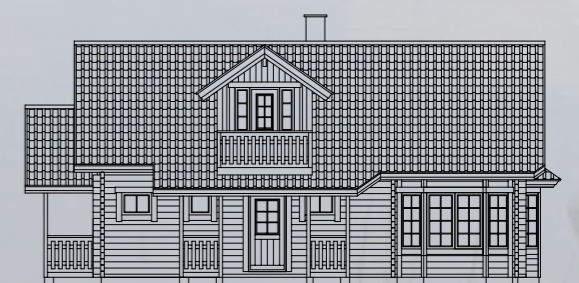
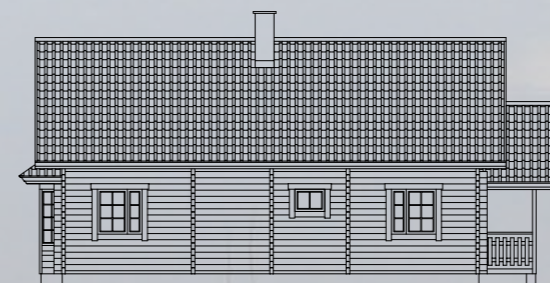
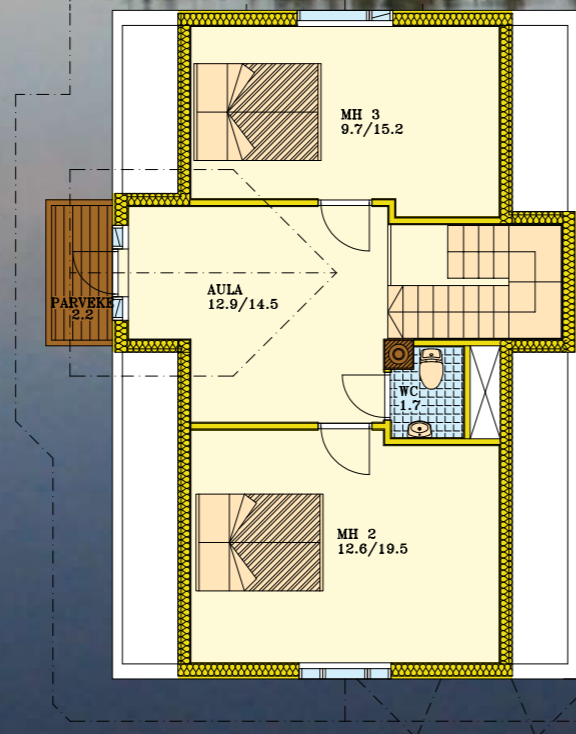


Detached Houses

**ELH-128**

3 bedrooms + recreation room

Area:  
 Ground floor 87,6 m<sup>2</sup>  
 Upstairs 40,4 (49,2) m<sup>2</sup>  
 Overall 128 m<sup>2</sup>



**ELH-135**  
**Ilta-aurinko**  
3 bedrooms

Area 135 m<sup>2</sup>



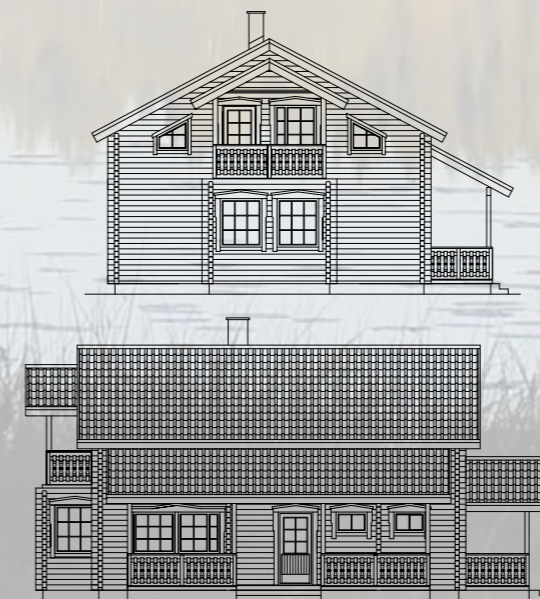
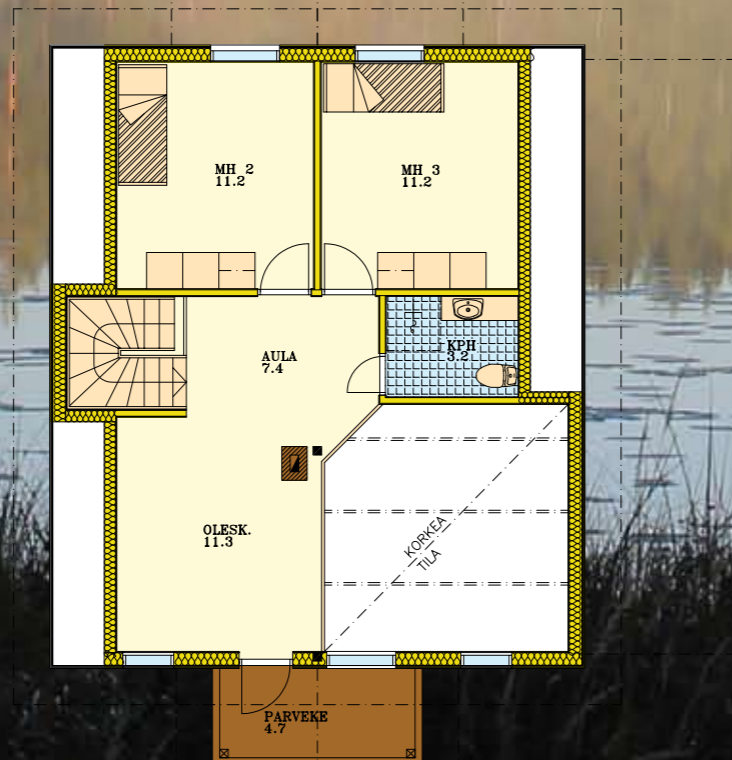
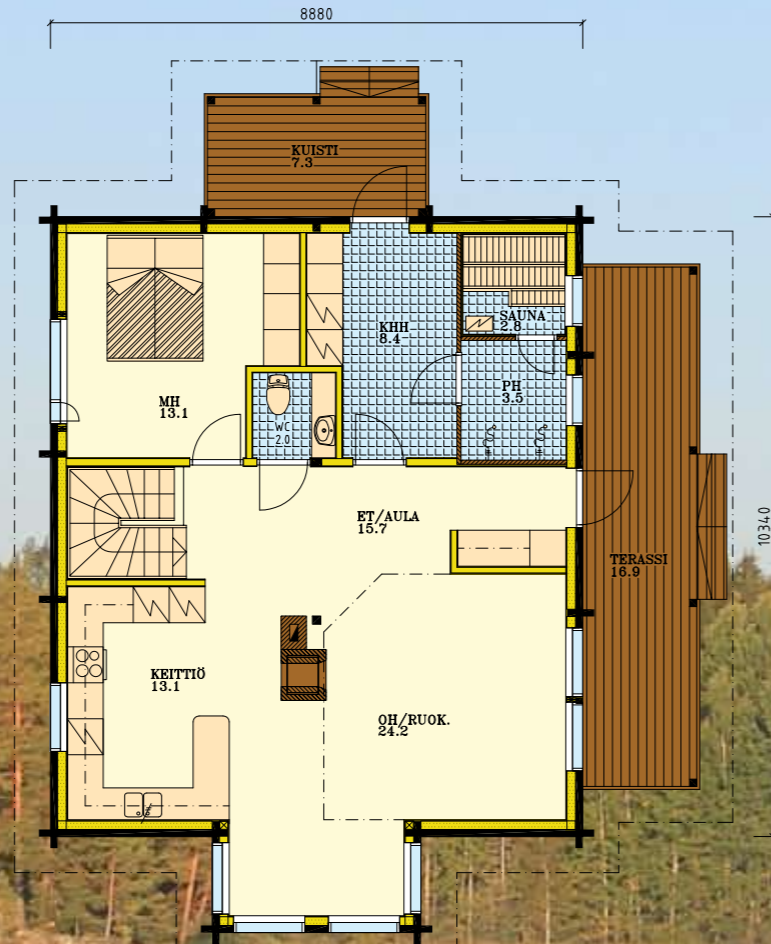


Detached Houses

**ELH-153**

3 bedrooms + recreation room

Area:  
 Ground floor 97,5 m<sup>2</sup>  
 Upstairs 55,5 m<sup>2</sup>  
 Overall 153 m<sup>2</sup>

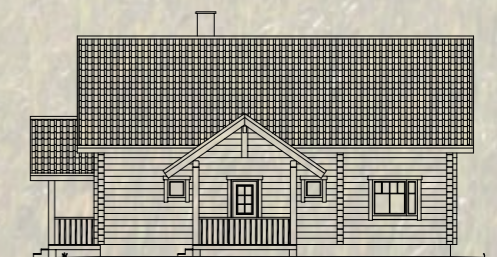
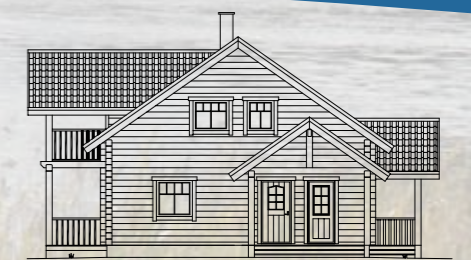
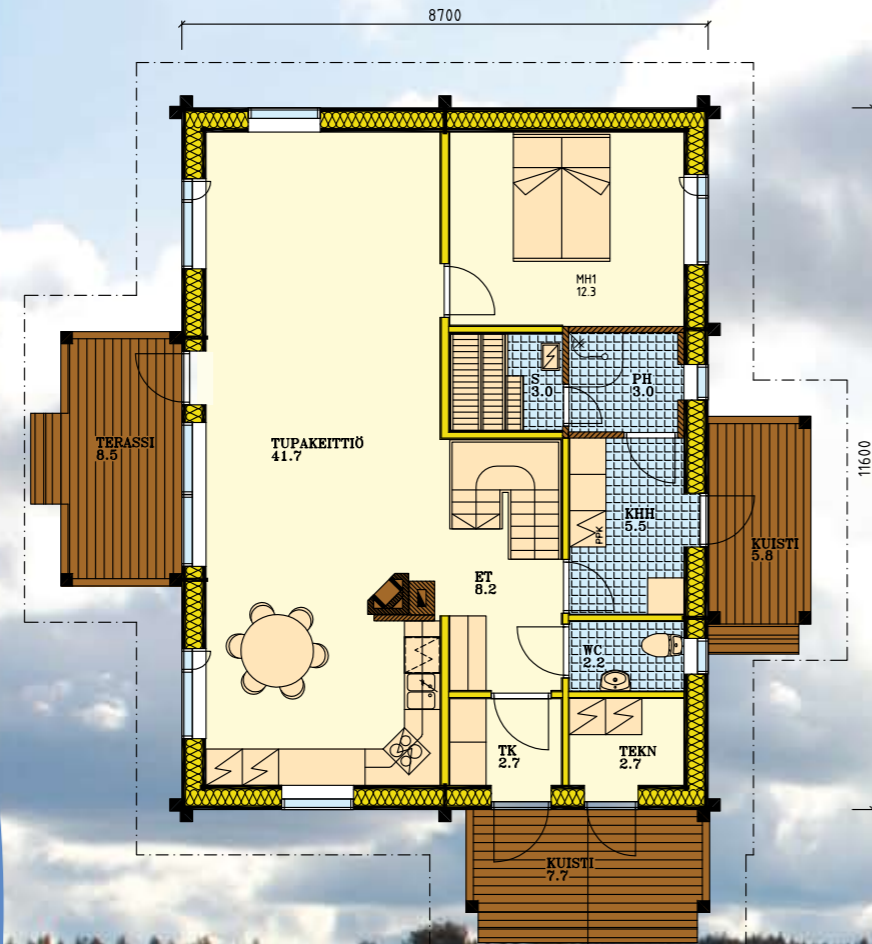


Detached Houses

**ELH-154**

4 bedrooms + recreation room

Area:  
 Ground floor 101 m<sup>2</sup>  
 Upstairs 53 m<sup>2</sup>  
 Overall 154 m<sup>2</sup>



# Detached Houses

## ELH-155 Aurinkoranta 4 bedrooms

Area 155 m<sup>2</sup>

1:100

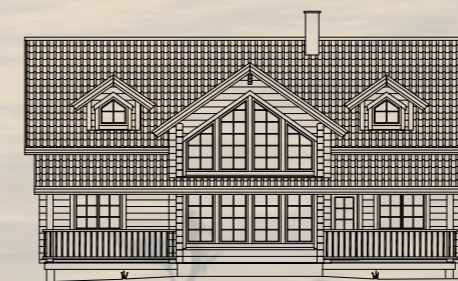


Detached Houses

**ELH-159**

4 bedrooms + recreation room

Area:  
 Ground floor 101 m<sup>2</sup>  
 Upstairs 58 (62,8) m<sup>2</sup>  
 Overall 159 m<sup>2</sup>





## Detached Houses

### ELH-179

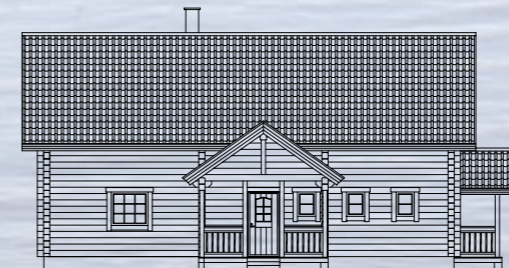
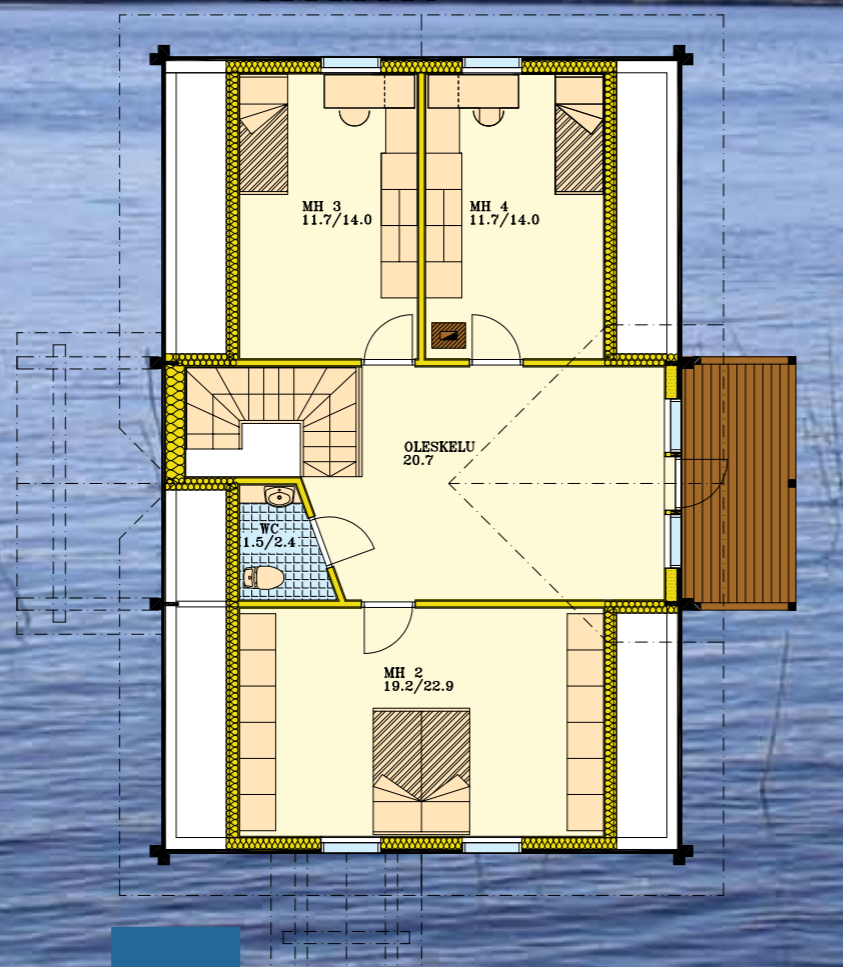
4 bedrooms + recreation room

Area:

Ground floor 107,5 m<sup>2</sup>

Upstairs 71,5 (74) m<sup>2</sup>

Overall 179 m<sup>2</sup>

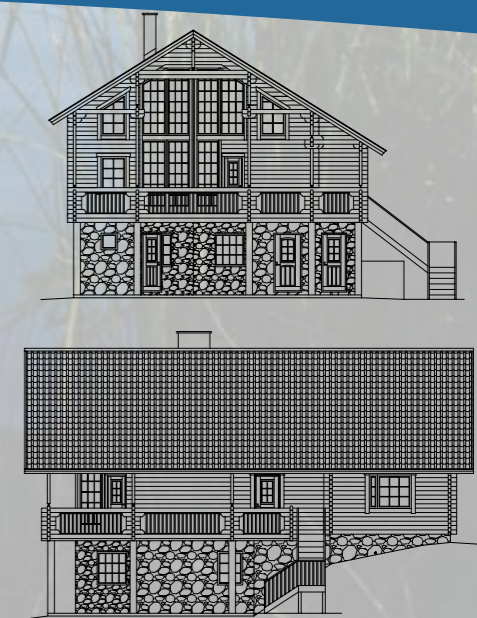
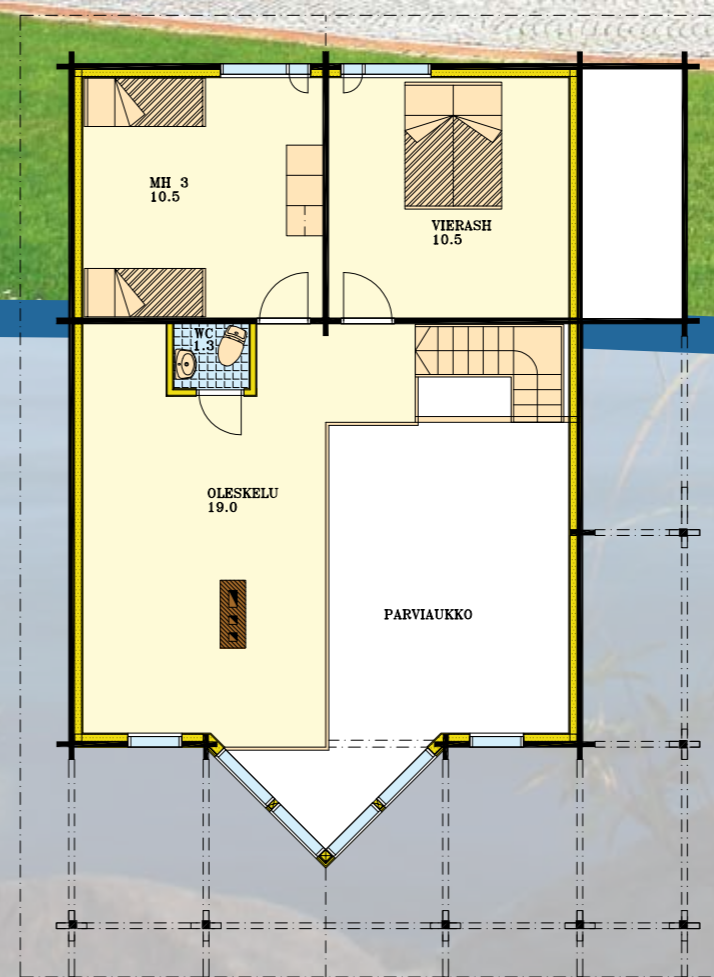
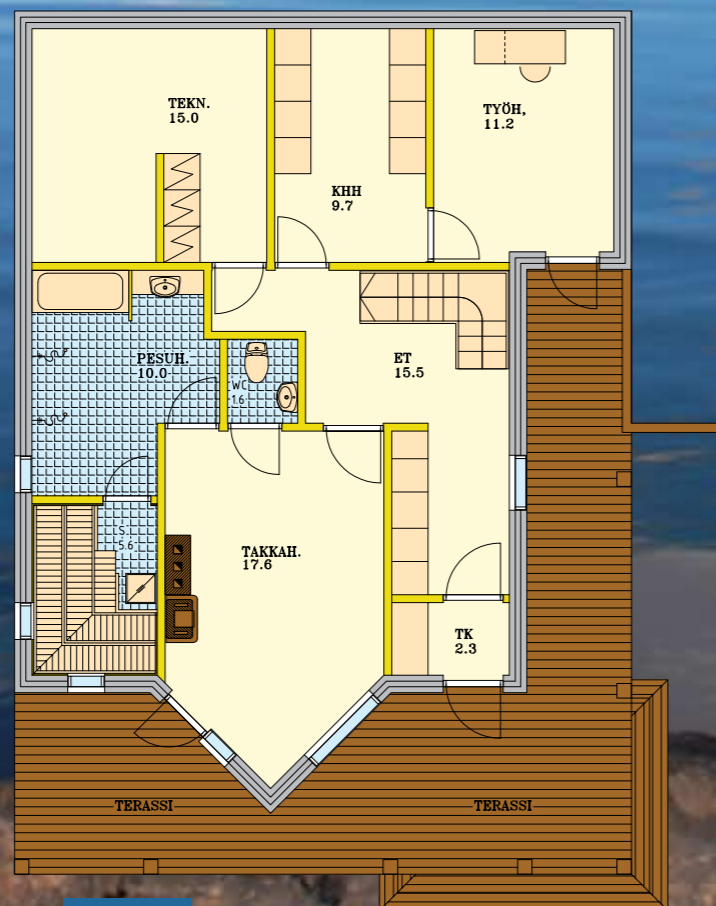
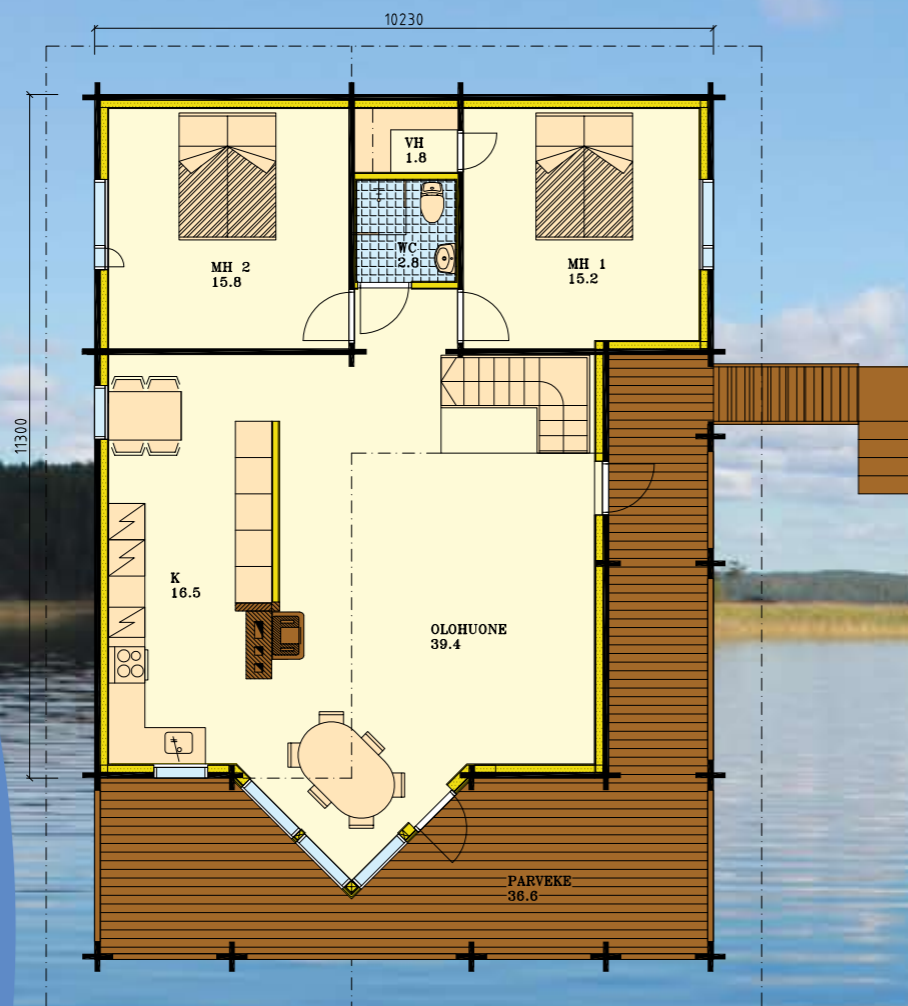


## Detached Houses

### ELH-257

4 bedrooms + recreation room  
+ study + fireplace room

Area:  
 Ground floor 107,5 m<sup>2</sup>  
 Upstairs 42,5 (60,3) m<sup>2</sup>  
 Basement 107 m<sup>2</sup>  
**Overall 257 m<sup>2</sup>**



# Detached Houses

1:100

## ELH-97

2 bedrooms

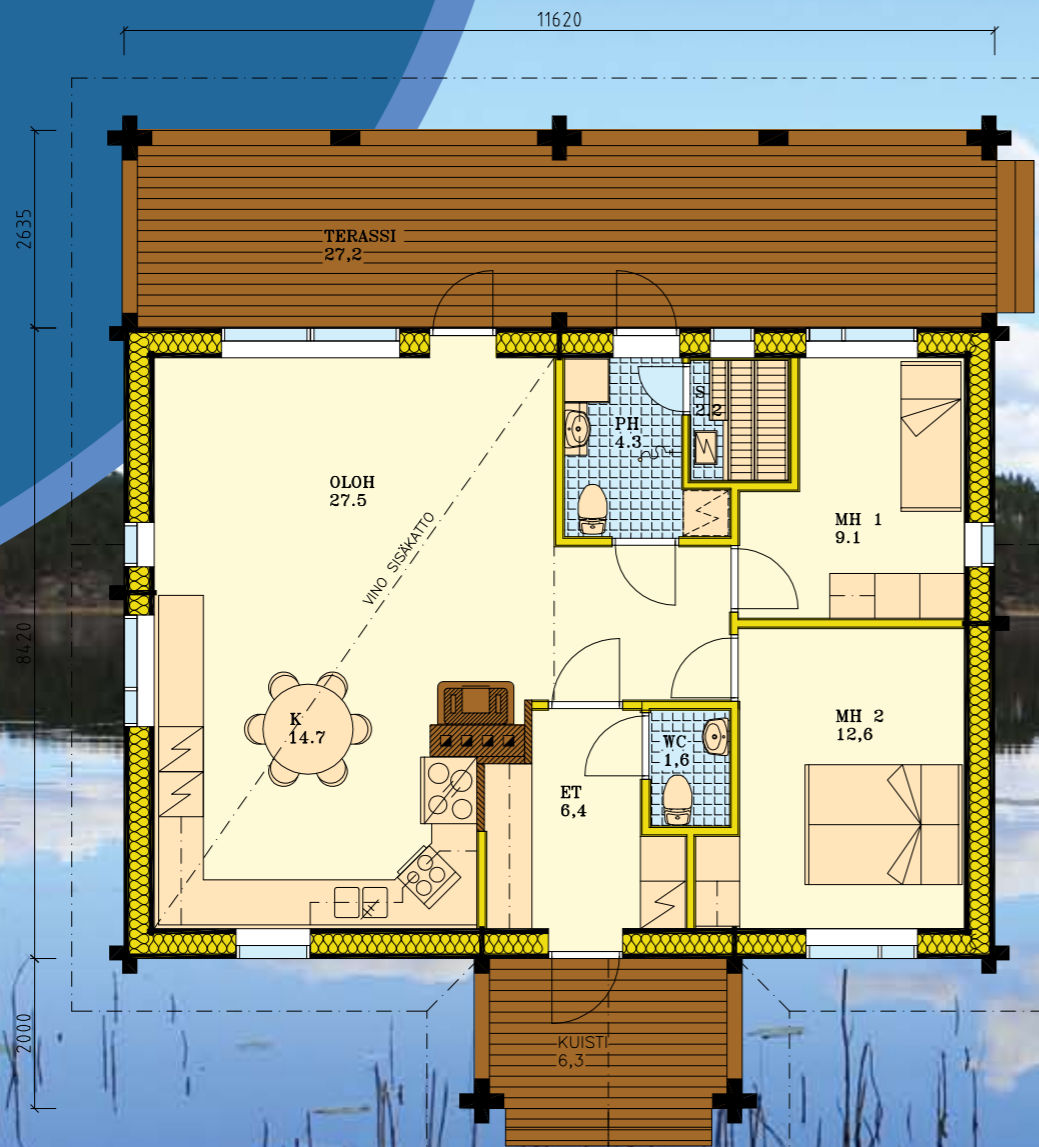
Area 97 m<sup>2</sup>

## ELH-195

4 bedrooms  
+ fireplace room

Area:  
Ground floor 98 m<sup>2</sup>  
Upstairs 97 m<sup>2</sup>  
Overall 195 m<sup>2</sup>

## ELH-97



1:200

## ELH-195

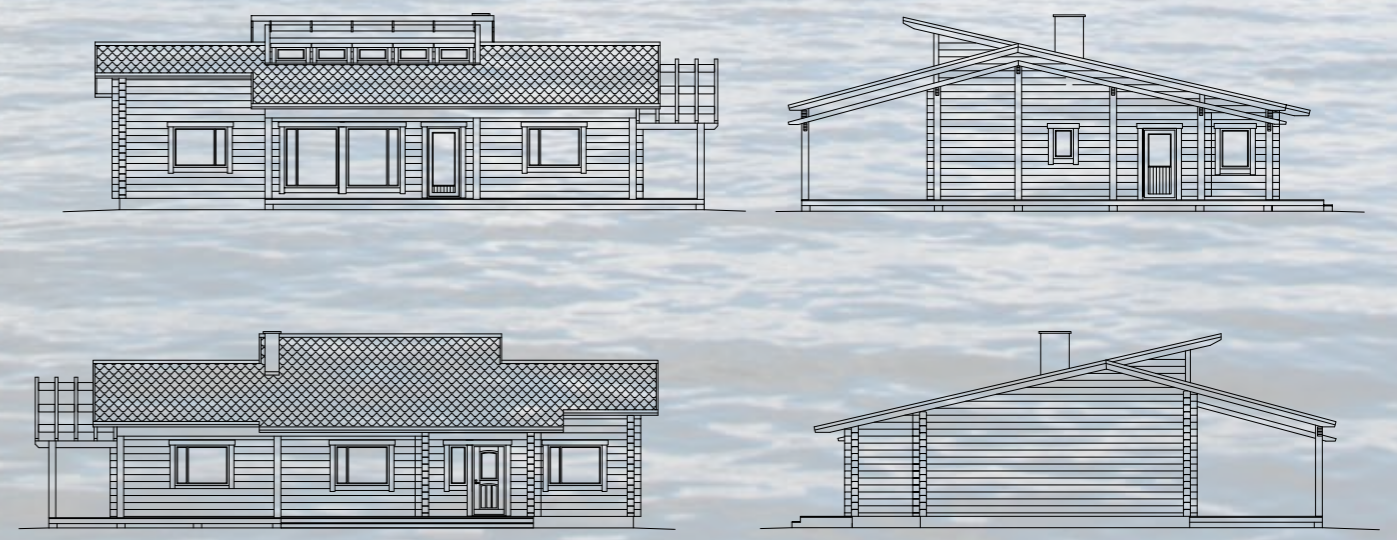


## ELH-195



**ELH-127**  
3 bedrooms

Area 127 m<sup>2</sup>





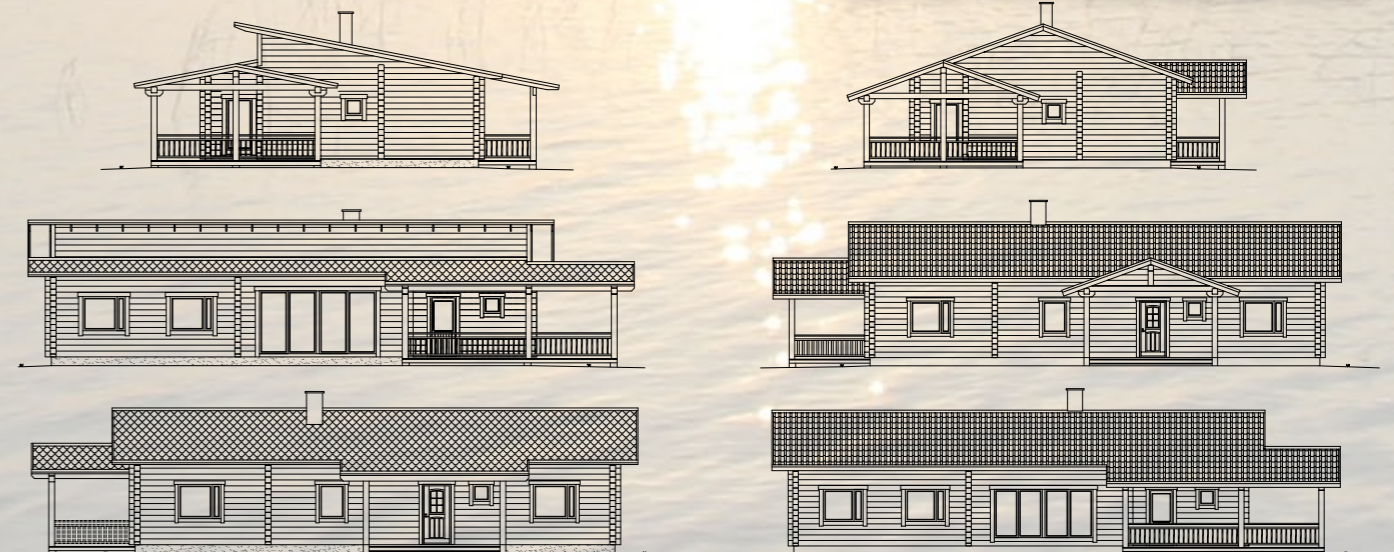
ELH-143

3 bedrooms + study

Area 143 m<sup>2</sup>

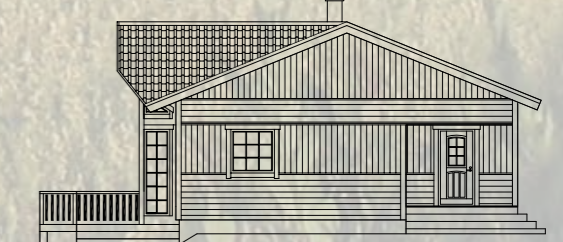
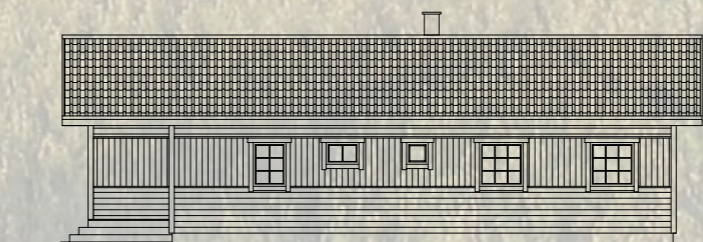
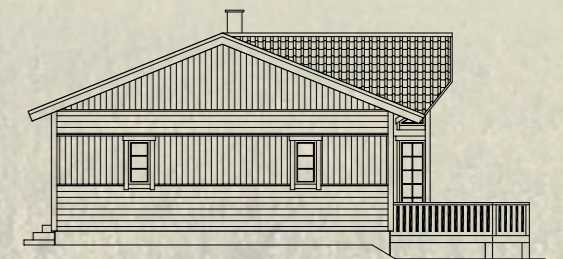
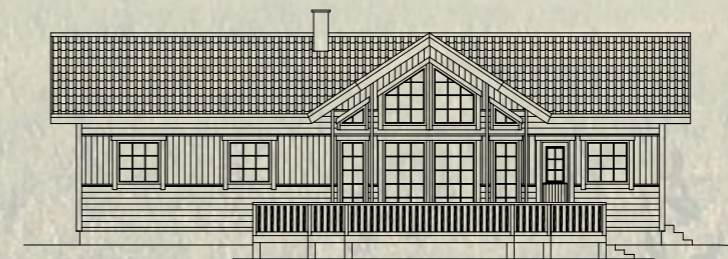


ELH-143 WITH TRADITIONAL ROOF



**ELH-147**  
4 bedrooms

Area 147 m<sup>2</sup>





**EUROHONKA** *Log Houses*  
EURO LOGHOUSES OY

**Euro Loghouses Oy**

Sulkavantie 198  
34930 LIEDENPOHJA

Telephone: +358 3 4758 500  
Fax / office: +358 3 4758 525  
Fax / factory: +358 3 4720 067

eurohonka@eurohonka.fi  
**www.eurohonka.fi**